

Demographics and Diversity of Mercer University's Graduate Engineering Programs

Richard O. Mines, Jr., Ph.D., F. ASCE, P.E.

Director MSE & MS Programs

Greg Lofton, BS

Graduate Coordinator

Mercer University School of Engineering

Overview

- Share with you observations regarding the demographics and diversity of the graduate student body in MUSE.
- The information collected in this study is being used in our SACS accreditation.
- We were interested in knowing the proportion of women and minorities enrolled in graduate programs.
- Also wanted to take a snap shot of where our programs are and make recommendations for improvements.

Master of Science in Engineering Degrees

1. **Computer Engineering (GCE) full time**
2. **Biomedical Engineering (GBE)**
3. **Electrical Engineering (GEE) full time**
4. **Engineering Management (EGM)**
5. **Environmental Engineering (GEV)**
6. **Mechanical Engineering (GME)**
7. **Software Engineering (SFE) on-line**

Master of Science in Associated Programs

1. **Environmental Systems (GES)**
2. **Software Systems (SFS): on-line**
3. **Technical Management (TCM)**
4. **Technical Communication Management (TCC): on-line**

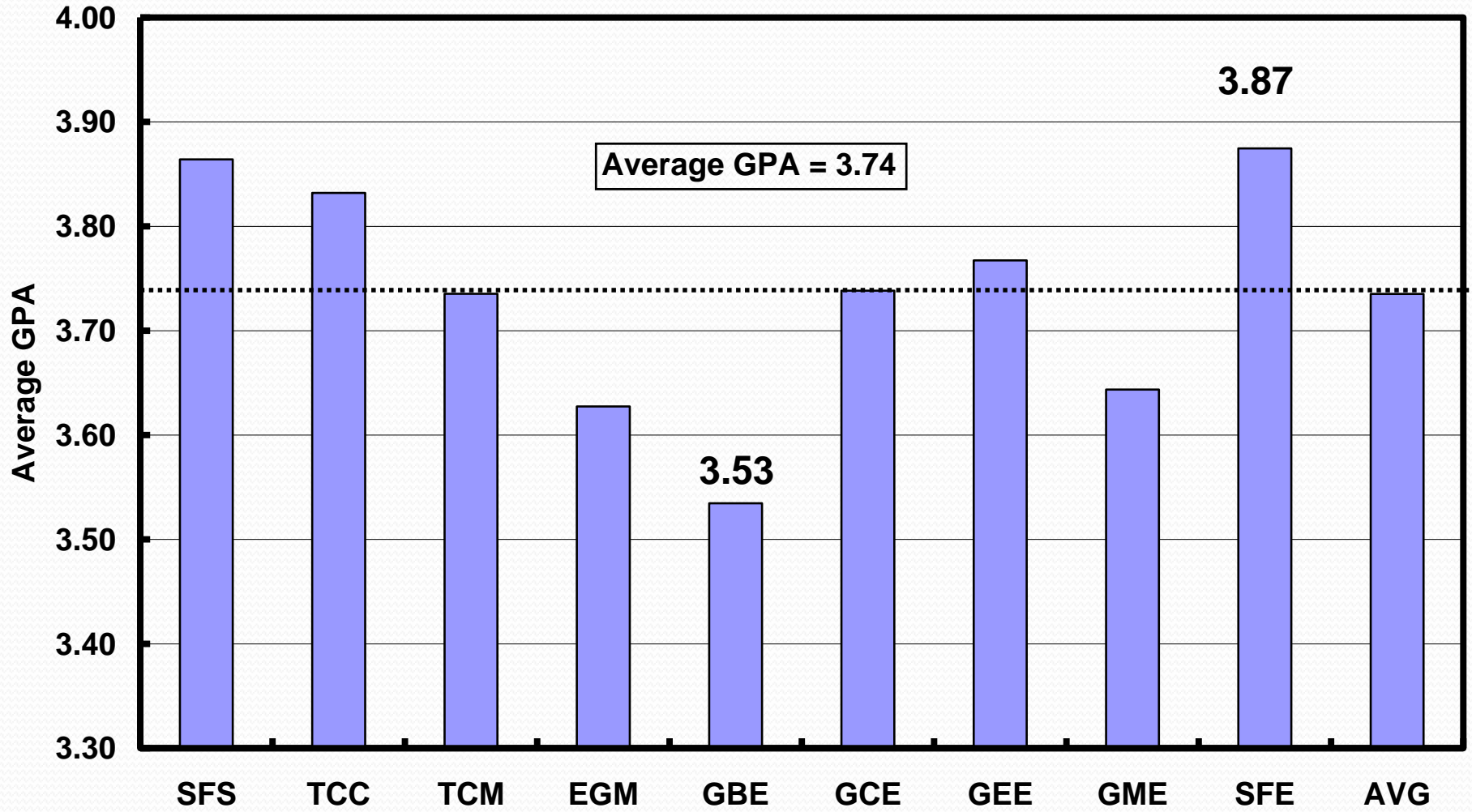
Literature Review

- African Americans and women comprise approximately 18% and 32% of freshmen in the freshmen class at MUSE, Butler and Hicks.
- Morley et al. purport that underrepresented groups will have to be inculcated into the workforce in order for the U.S. to remain competitive in science and engineering.

Literature Review

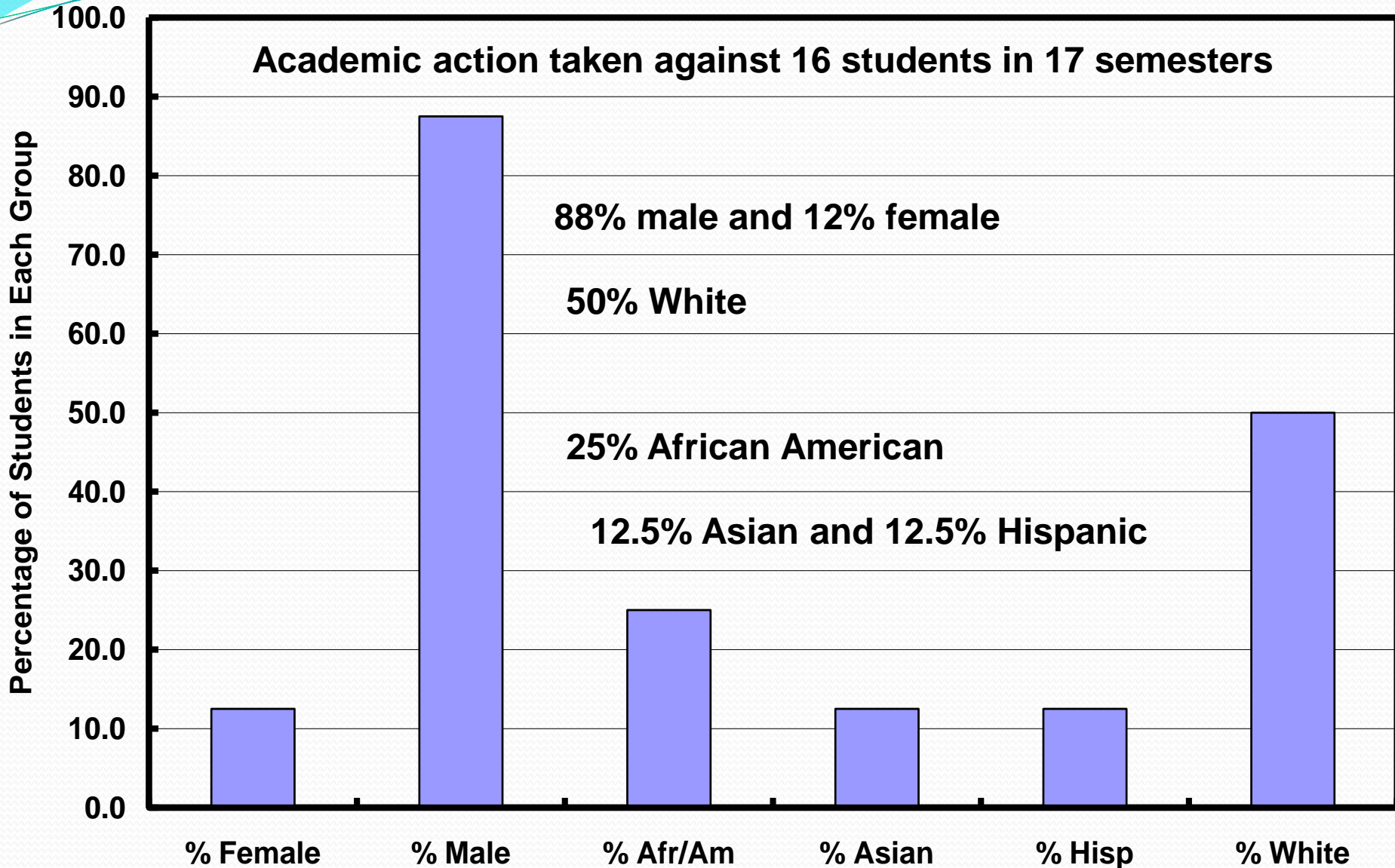
- Purdy and Wasburn raised concerns about:
 - under-representation of women and minorities in undergraduate/grad engineering programs
 - negative impact on diversity due to declining enrollment of international students
 - the elimination of diversity programs at state-supported universities.
- Reichert and Absher advocate the recruitment of URM and greater institutional commitment in doing this.

Average GPA by Program 2002-03 through 2008-09

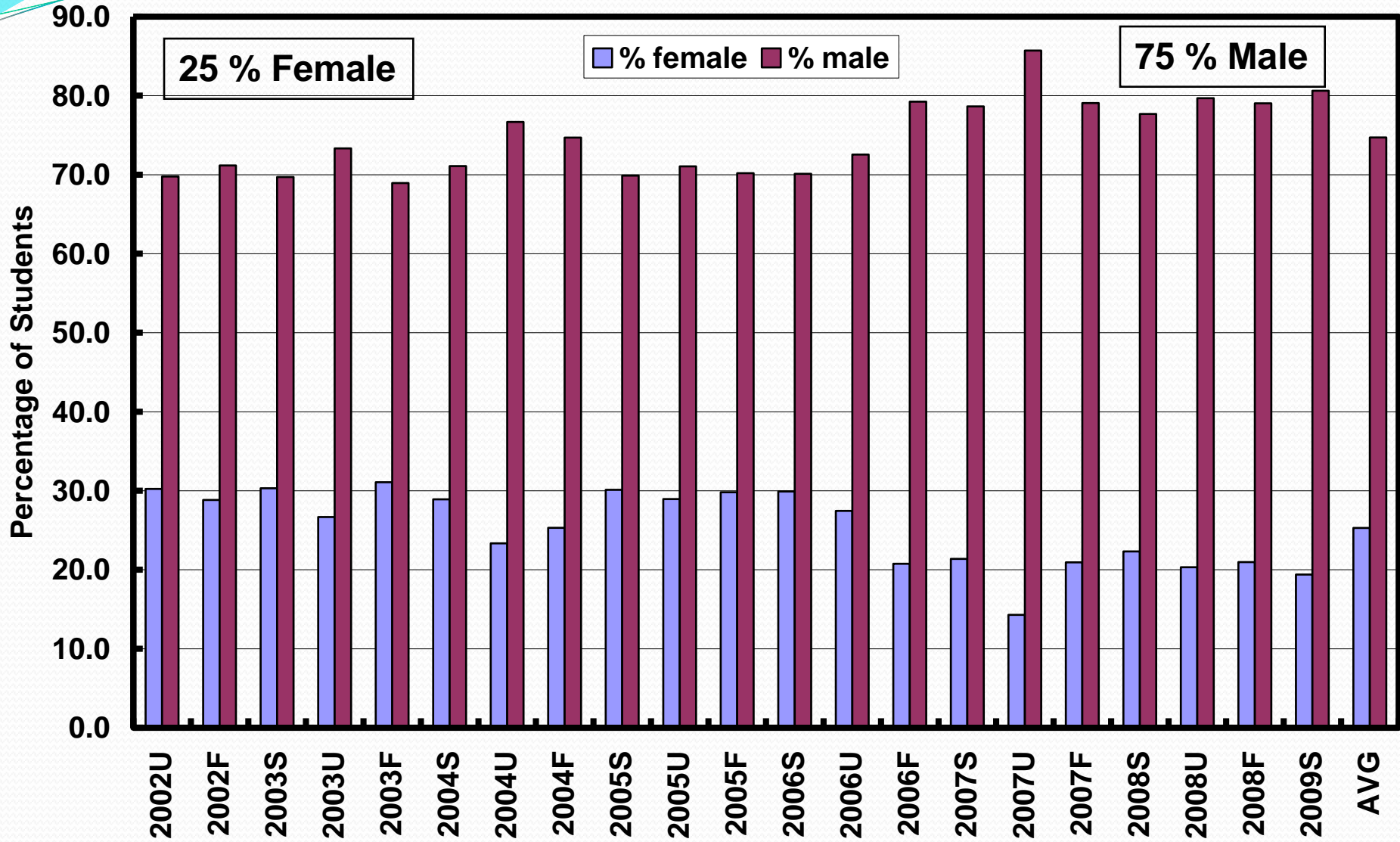


% of Student Involved in Academic Action

Academic action taken against 16 students in 17 semesters



Gender of Students



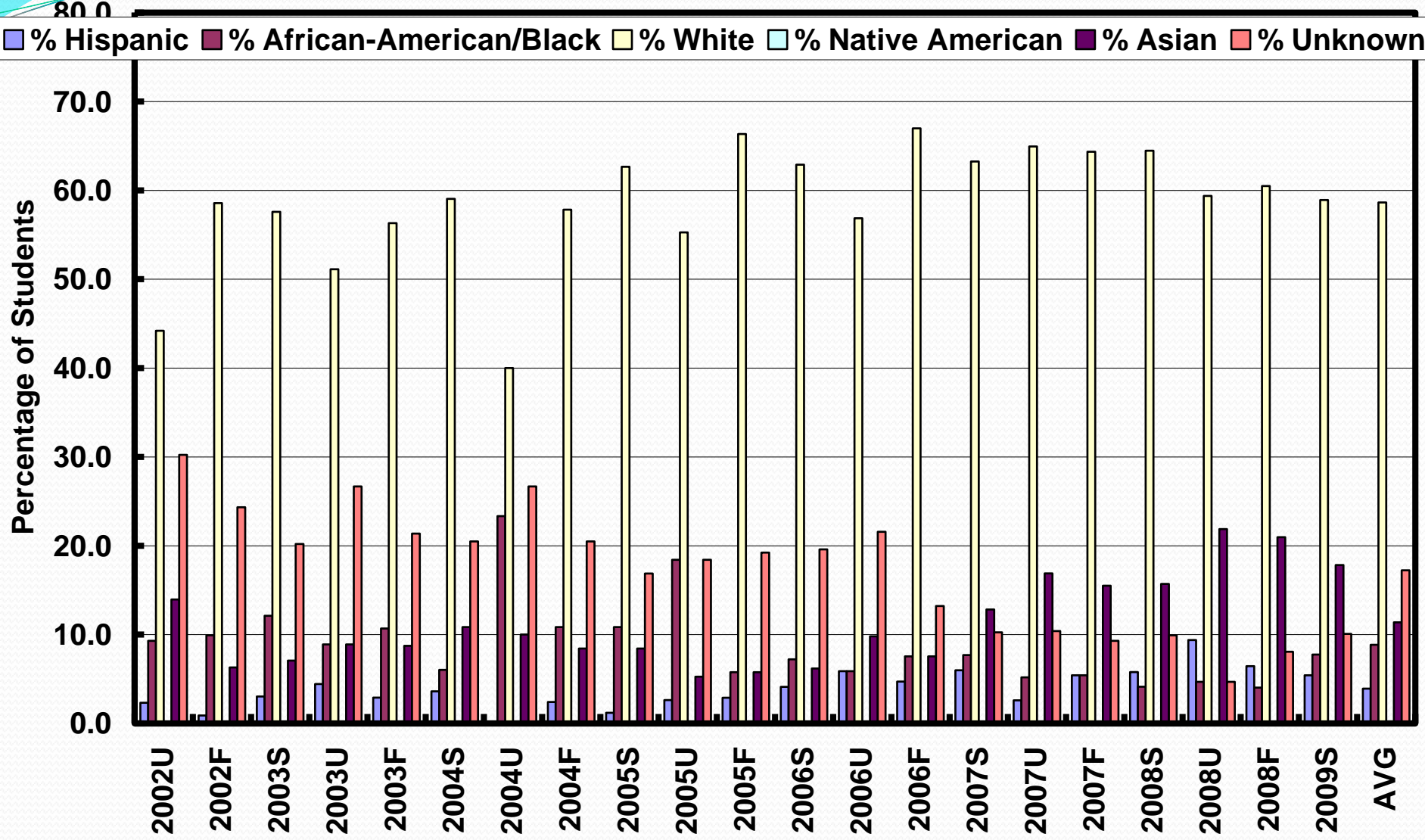
59% White

11% Asian

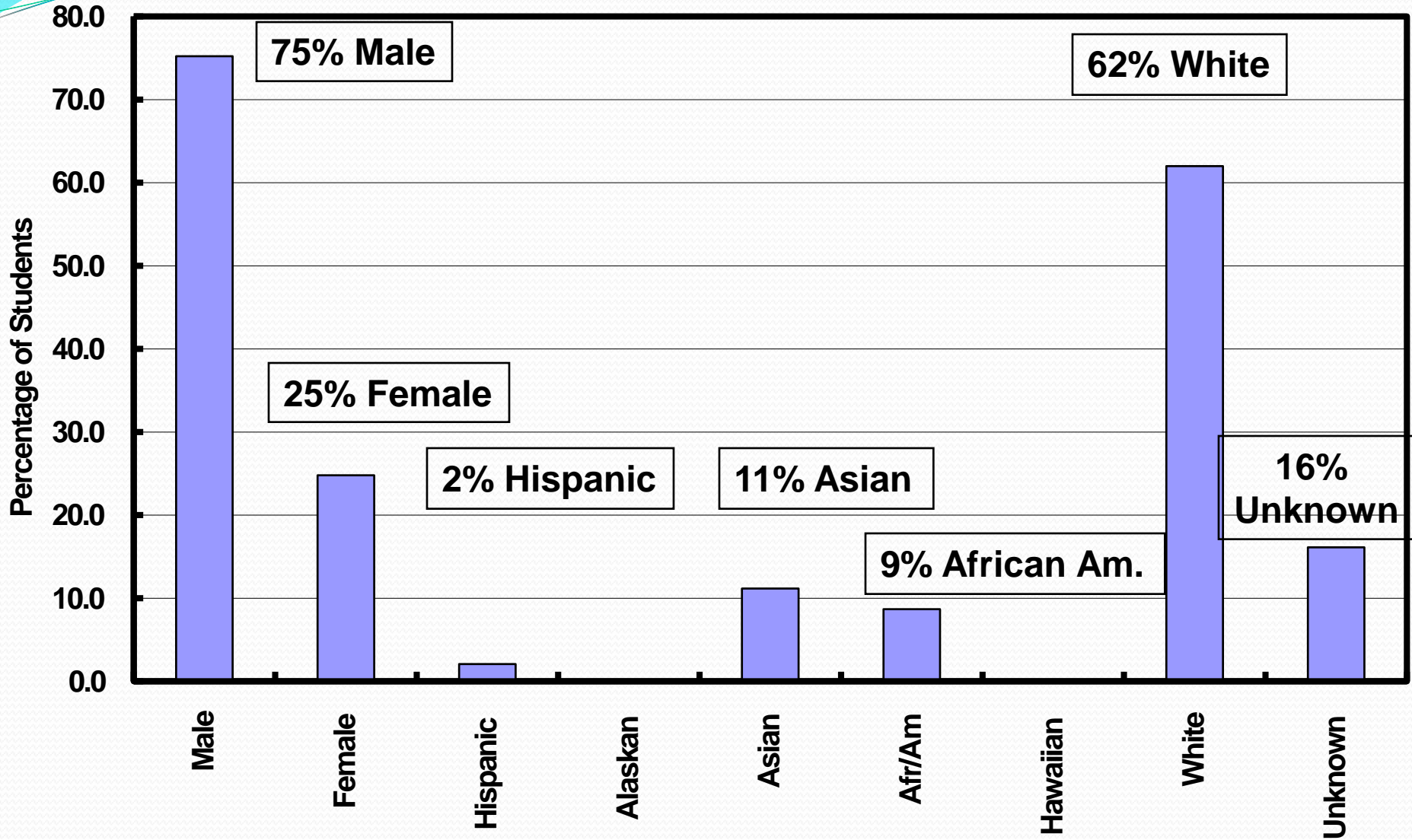
Enrollment by Ethnicity

9% Afr Am

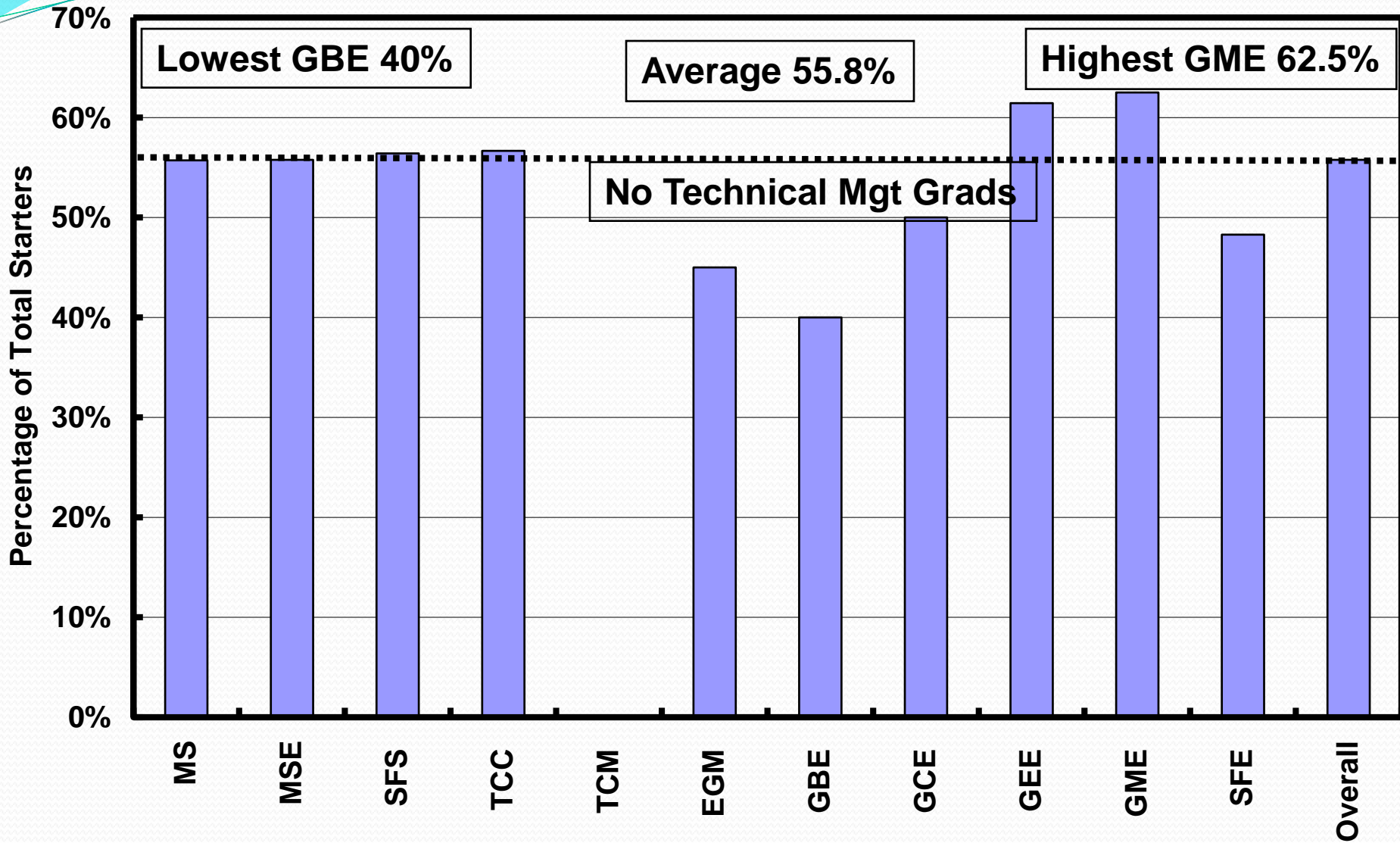
4% Hispanic



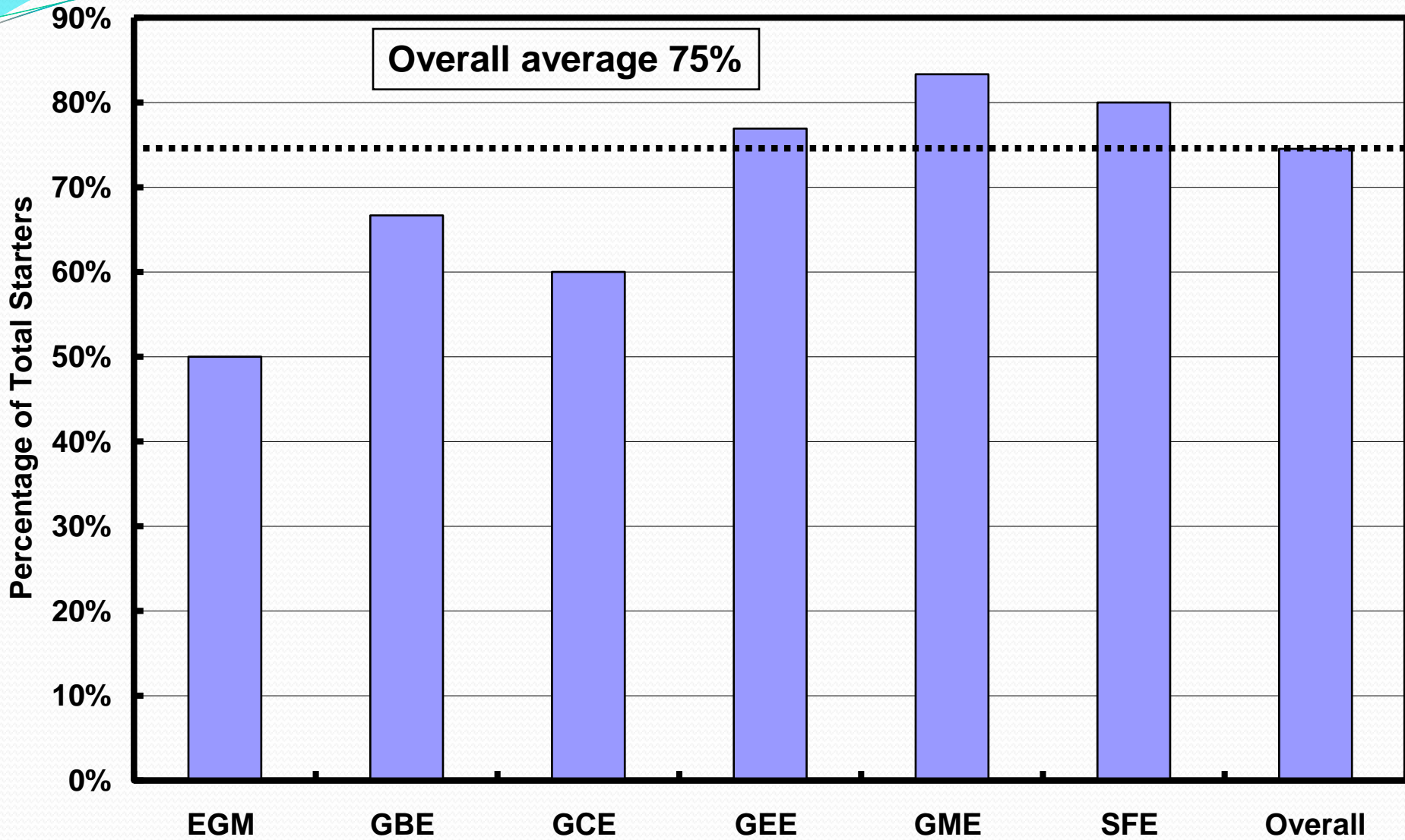
Ethnicity and Gender of Students Earning Master's Degrees 2002F - 2009S



Overall Graduation Rates 2002-03 through 2006-07

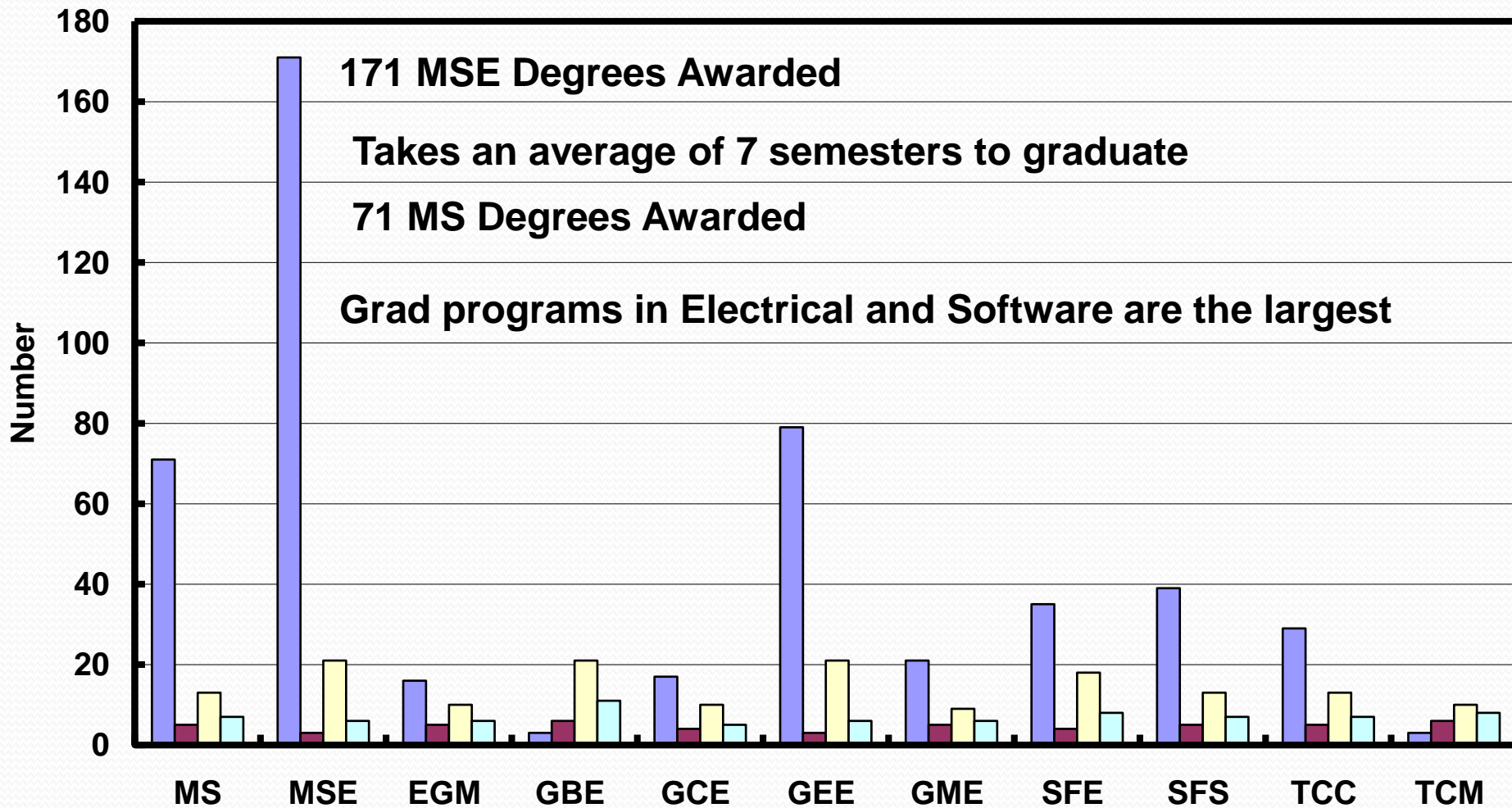


5th Year Graduation Rates 2002-03 through 2006-07



Degrees Awarded and # of Terms to Graduation 2002-03 through 2008-09

■ Degrees Awarded
 ■ Minimum Terms
 ■ Maximum Terms
 ■ Average Terms



Summary 1

1. 1837 students were enrolled in graduate engineering programs with the following average percentage of students by ethnicity: 4% **Hispanic**, 9% **African American**, 11% **Asian**, 17% **unknown**, and 59% **White**.
2. 75% of students enrolled were **male** and 25% **female**.

Summary 2

3. **Ethnicity** of our students' earning degrees was similar to the average percentages for enrollment: **2% Hispanic, 9% African American, 11% Asian, 16% unknown, and 62% White.**
4. **71 MS degrees and 171 MSE degrees** were awarded in 7 academic years.
5. The **overall graduation rate** of our graduate students was **55.8%.**

Summary 3

6. For students enrolled in the **dual-degree** program, **75%** of those that started the program earned their degrees.
7. The **gender** of our graduate students was **25%** female and **75%** male.
8. The **overall GPA** of all graduates students was **3.74**. **Software** students averaged **3.87** and **biomedical** **3.53**.

Recommendations

- We plan to **conduct exit surveys** for students that drop out of our graduate program to determine what factors led them to their decision to leave.
- It is our desire to form a **focus group** to study ways that we can better interact with the educational office at Robins AFB to promote, recruit, and retain qualified graduate students.



Questions?