

Topics

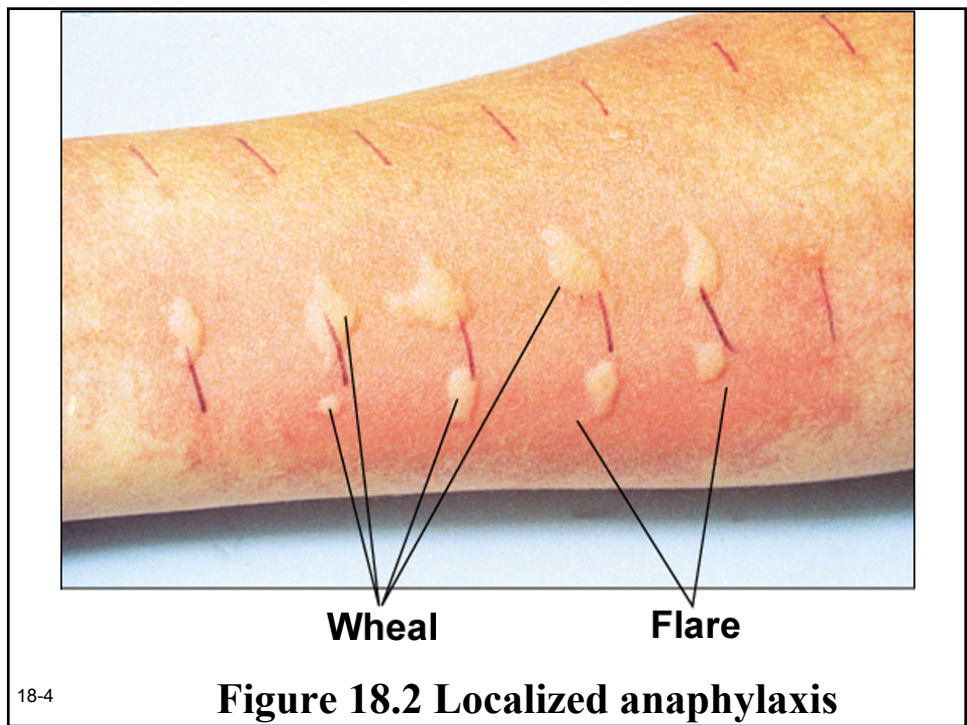
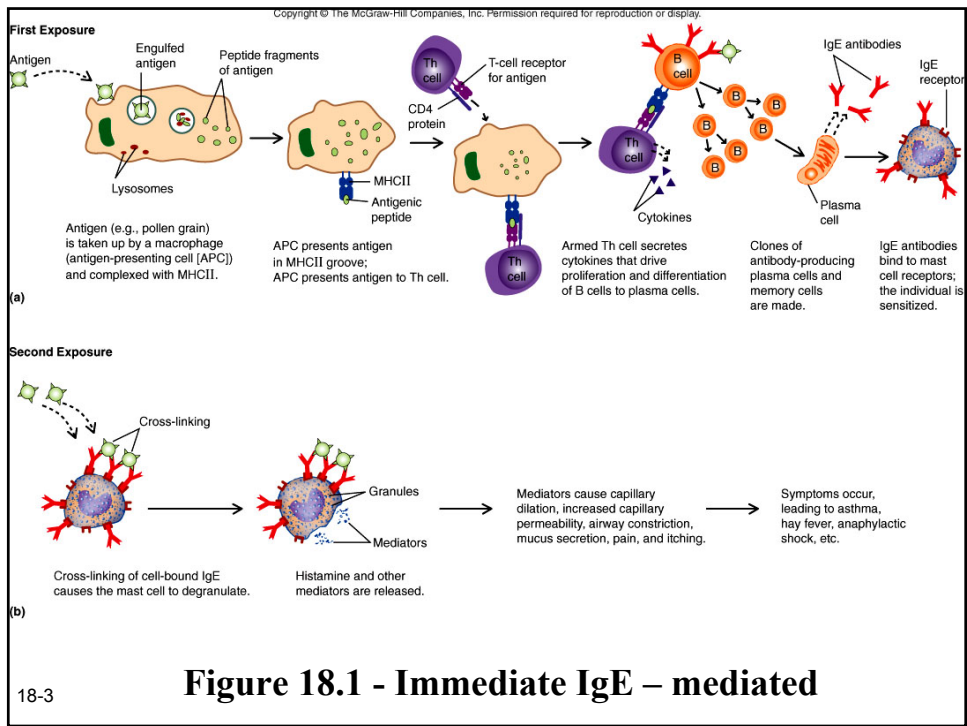
- **Type I hypersensitivity**
- **Type II hypersensitivity**

18-1

Type I hypersensitivity

- **Immediate IgE –mediated**
- **Localized anaphylaxis**
- **General anaphylaxis**
- **Immunotherapy**

18-2

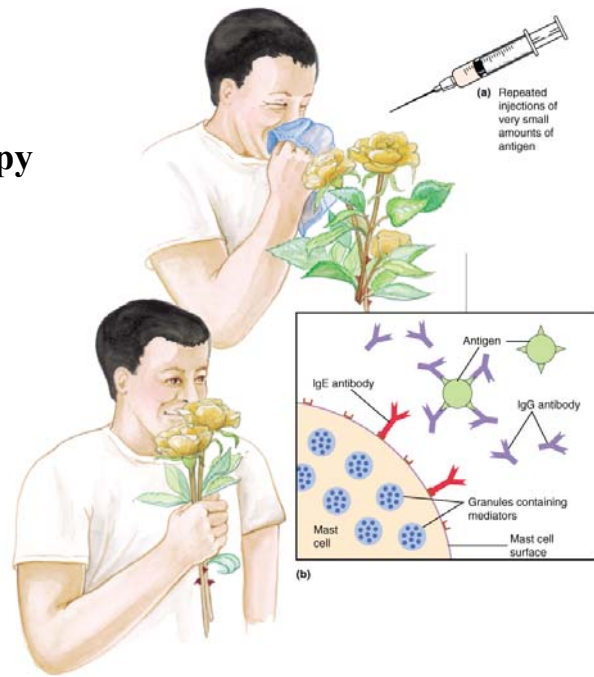


Generalized anaphylaxis

- Antigen become widespread
- Shock (reduced blood pressure)
- Ex. Bee stings, peanuts and penicillins

18-5

Figure 18.3
Immunotherapy



18-6

Type II hypersensitivity

- **Cytotoxic**
- **Transfusion reactions**
- **Hemolytic diseases**

18-7

Cytotoxic

- **Complement lysis**
- **Antibody – dependent cellular cytotoxicity (ADCC)**

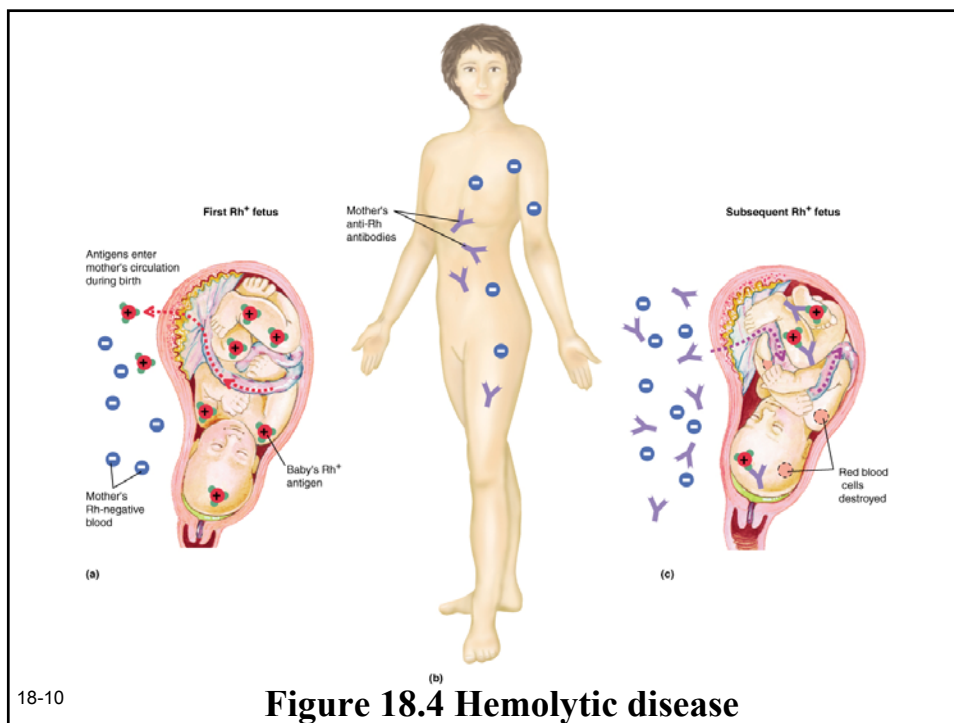
18-8

TABLE 18.2 Antigens and Antibodies in Human ABO Blood Groups

Blood Type	Antigen Present on Erythrocyte Membranes	Antibody in Plasma	Incidence of Type in United States		
			Among Whites	Among Asians	Among Blacks
A	A	Anti-B	41%	28%	27%
B	B	Anti-A	10%	27%	20%
AB	A and B	Neither anti-A nor anti-B	4%	5%	7%
O	Neither	Anti-A and anti-B	45%	40%	46%

Table 18.2 - Transfusion reactions

18-9



18-10

Figure 18.4 Hemolytic disease