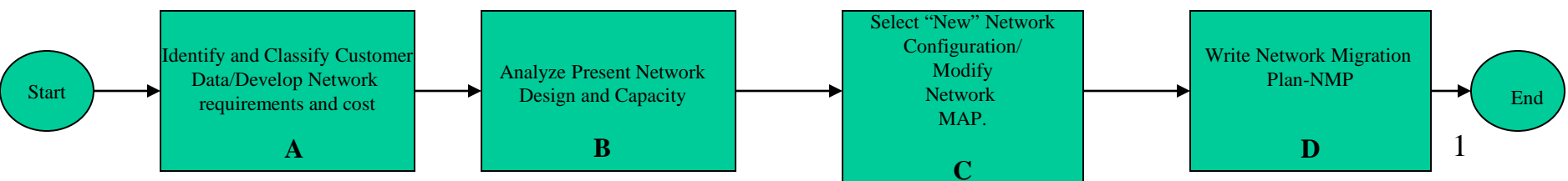


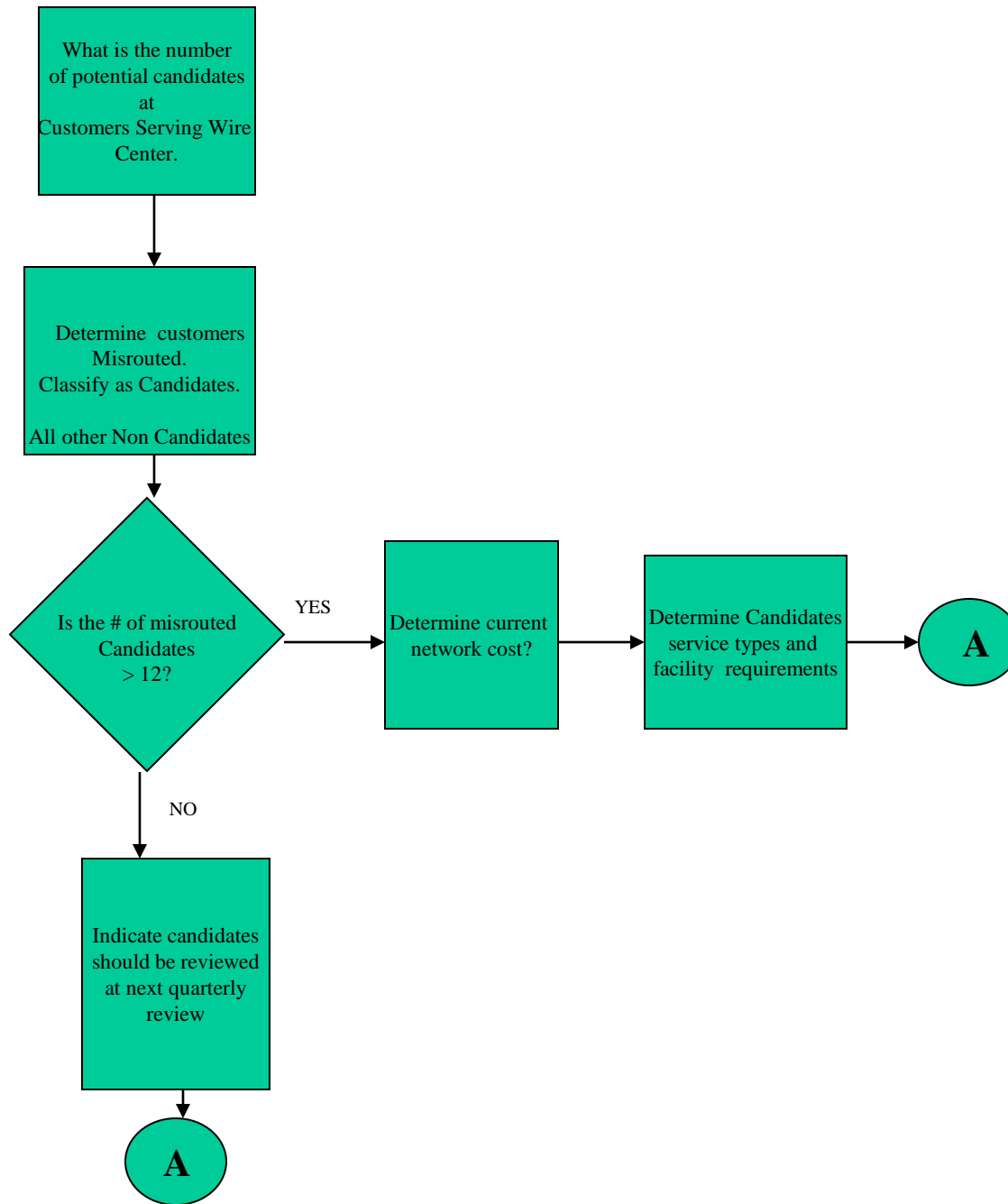
**Learning Goal** - The Student will be able to classify Customer network data and Create Network Migration Plans(NMPs) for network infrastructure expansion and Customer re-grooms ( moves) for established network switch territories within the US LEC Switched Network.

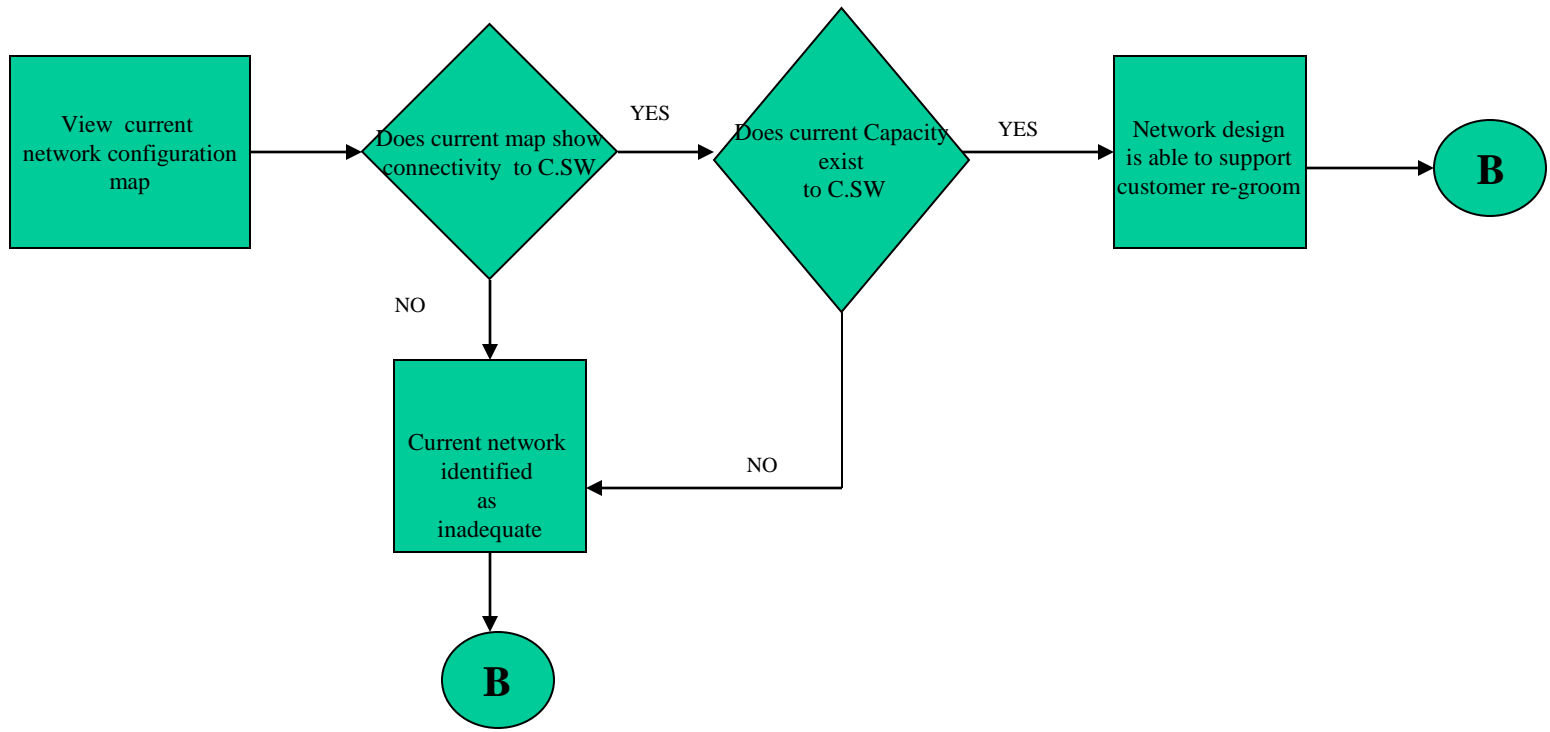
**Type of Learning Outcome-** This outcome is Procedural/Intellectual skill. The learner will be required to complete the necessary task steps required to develop NMPs.

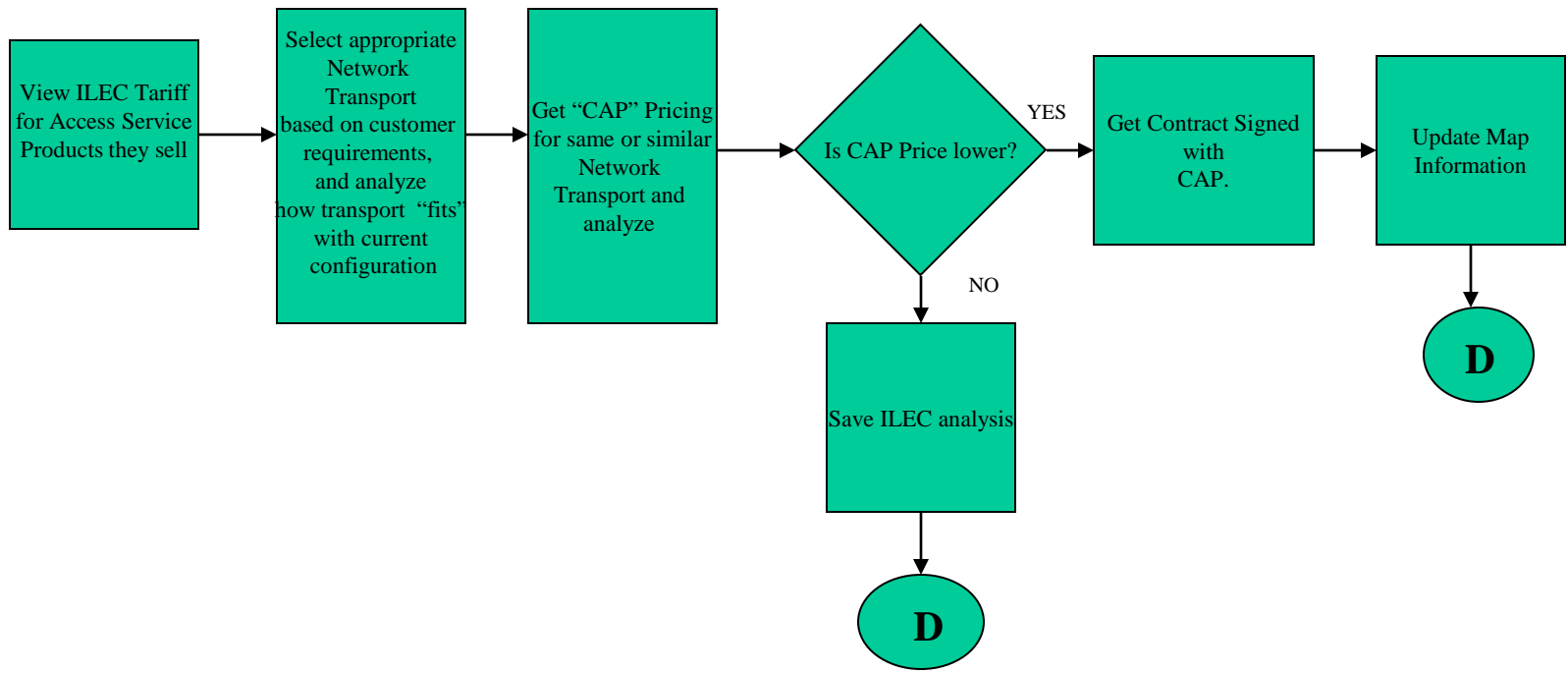
- Discriminations** - The learner will be able to select an appropriate network transport service and compare features and cost for an Incumbent Local Exchange Company (ILEC), such as BellSouth and a Competitive Access Provider, such as AT&T Local Services (ALS).
- Concept** - The learner will understand the concepts of local access, facility transport and High Capacity Transport such as, DS3, OC-3 and OC-12 up to OC-48. The learner will also understand the term network connectivity.
- Principle** - The learner will develop the relationship between current customer demand, network capacity, and network cost.
- Procedure** - The learner will be able to perform the process of developing an NMP.
- Problem Solving** - The learner will evaluate current network demand and implement Engineering Recommendation-NMP to modify existing Network infrastructure to support demand in a costly manner.
- Declarative Knowledge** - The learner will be able to state the general steps involved in developing NMPs.

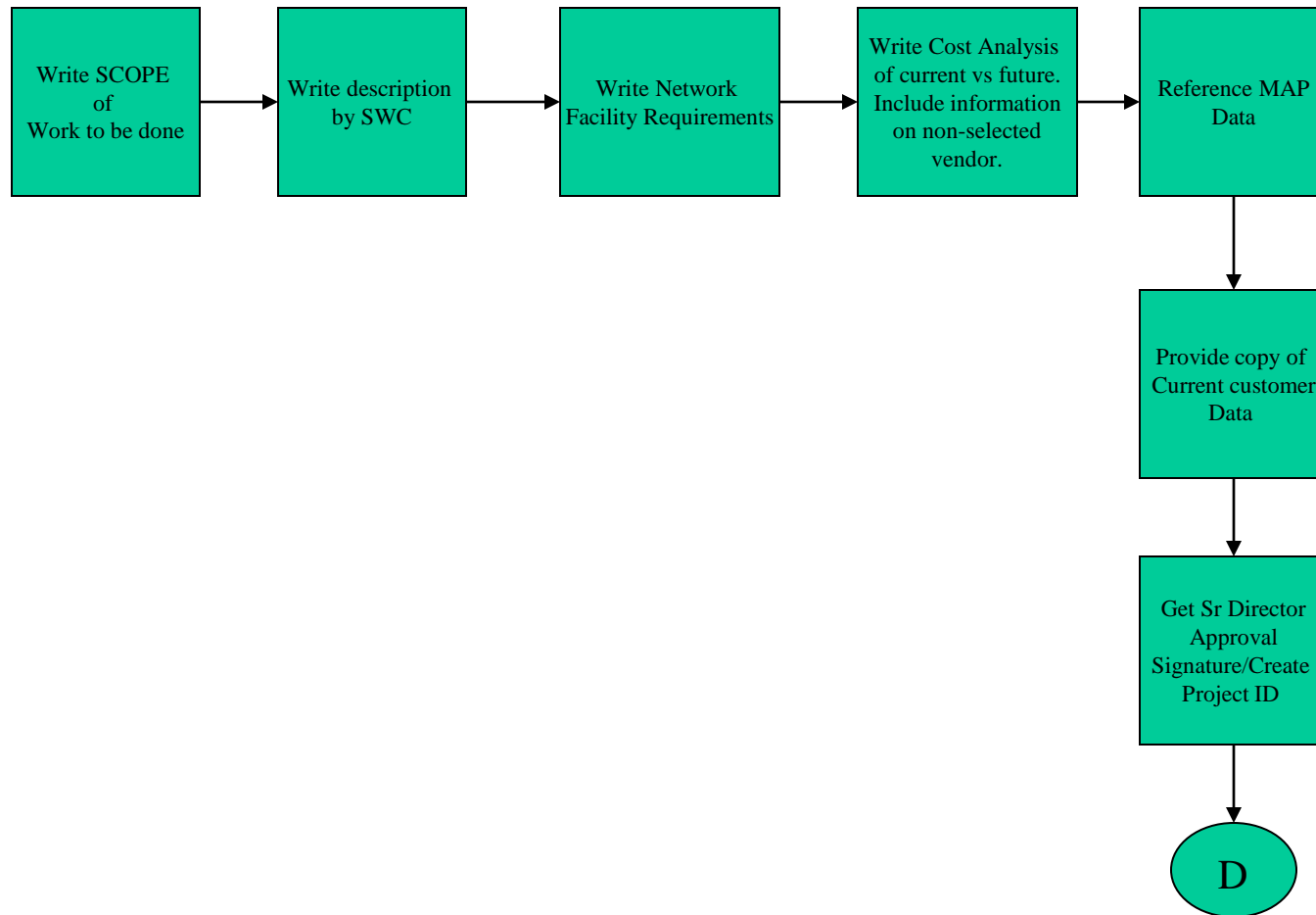
**Information Processing Analysis** - The information Processing Analysis consist consist of four parts: 1) Identifying and Classifying customer data/Developing network requirement and cost 2) Analyze Present Network Design, 3) Selecting “New” Network Configuration/Modifying Network Map, 4) Writing Network Migration Plan.











•**Entry-Level Behaviors** - The Learner should understand the concepts of Network Transport and Levels such as DS3 and Optical structures like OC-3 up to OC-48. The Learner should have an understand network routing and connectivity. The Learner should be familiar with MS Office applications such as, MS WORD, PowerPoint and EXCEL.